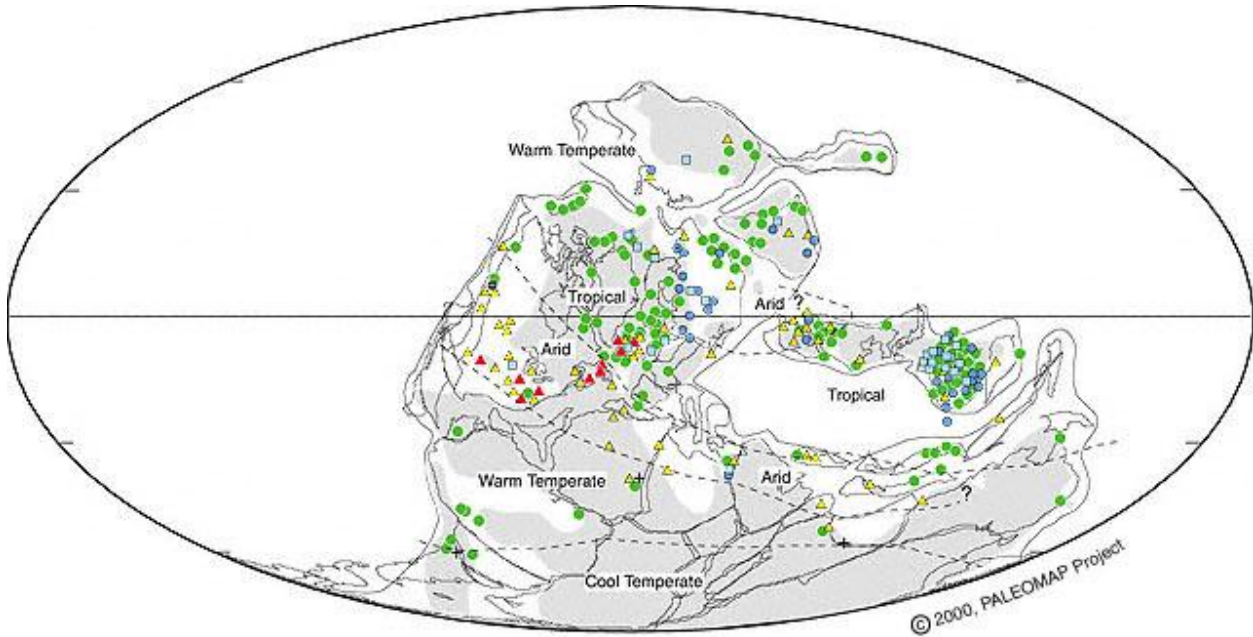
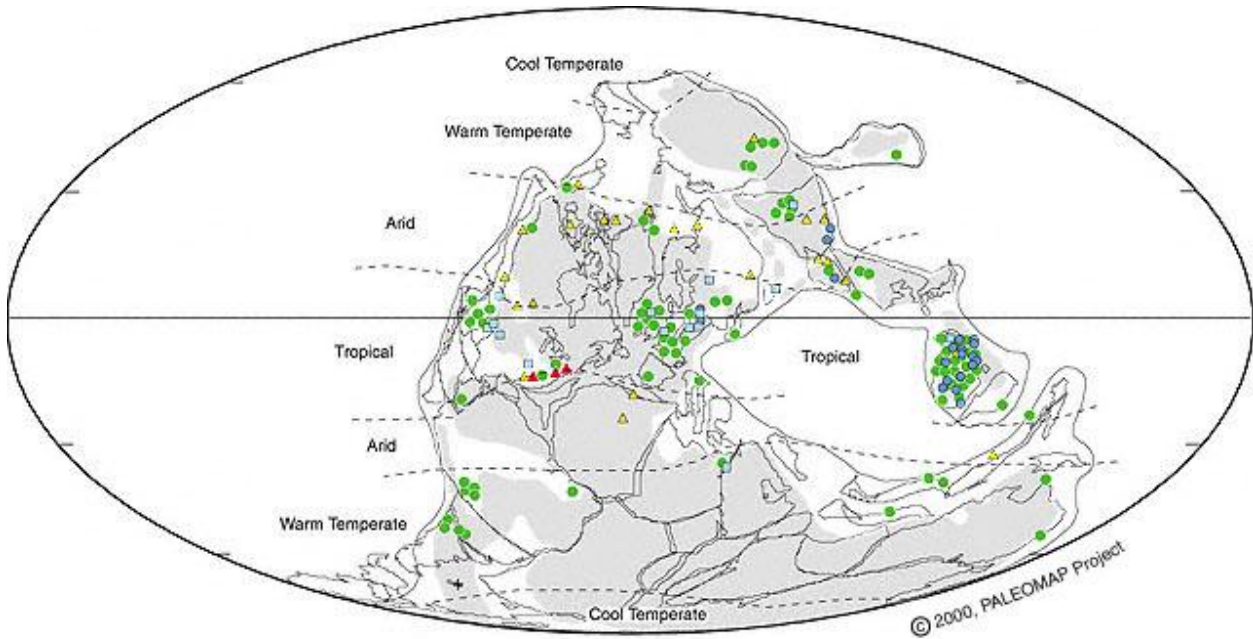


Paleo-climate maps for the Carboniferous and Permian



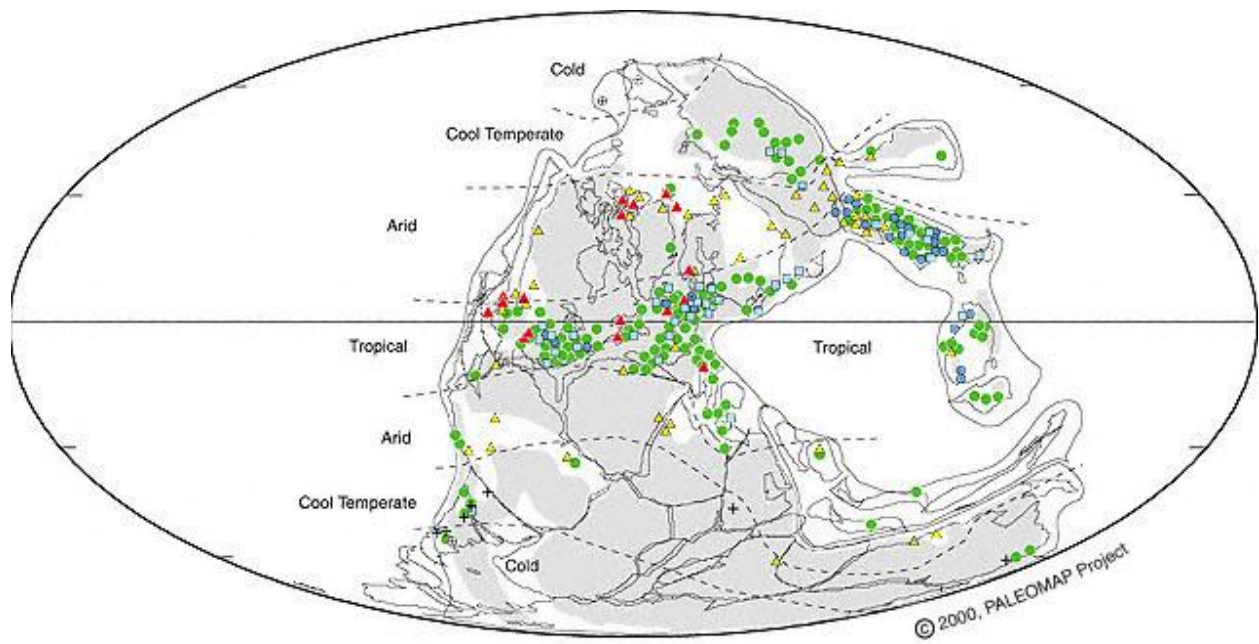
Lower Carboniferous (Tournaisian - Viséan)

(340 Ma)

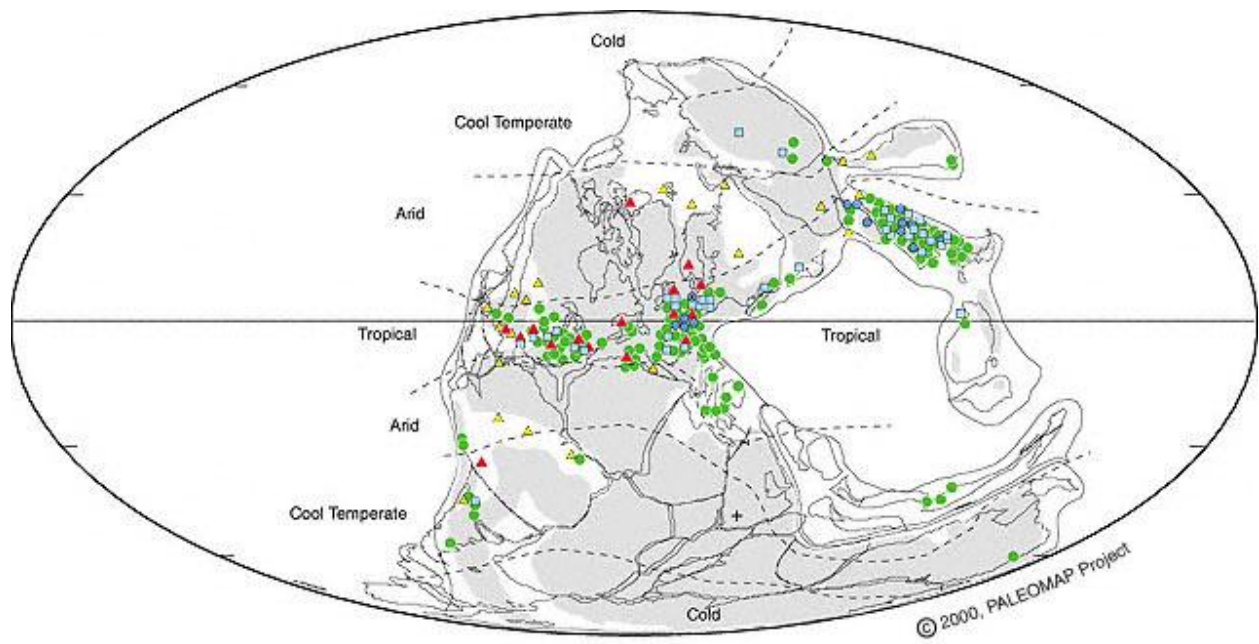


Lower Carboniferous (Serpukhovian)

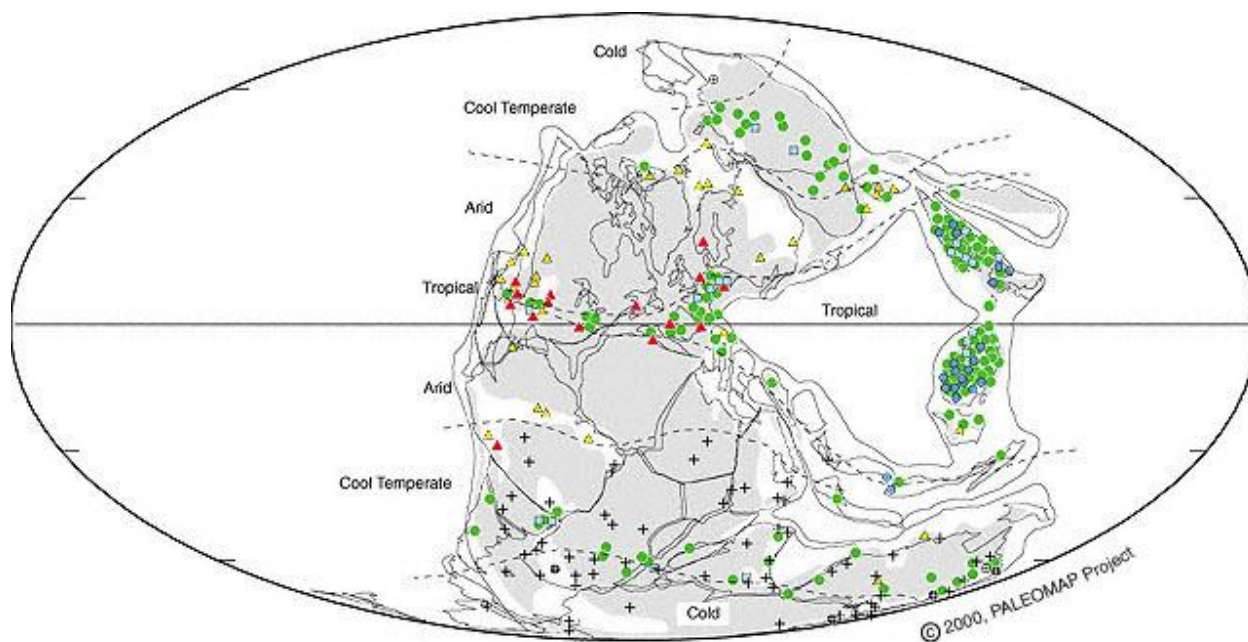
(320 Ma)



Upper Carboniferous (Bashkirian - Moscovian)
(300 Ma)

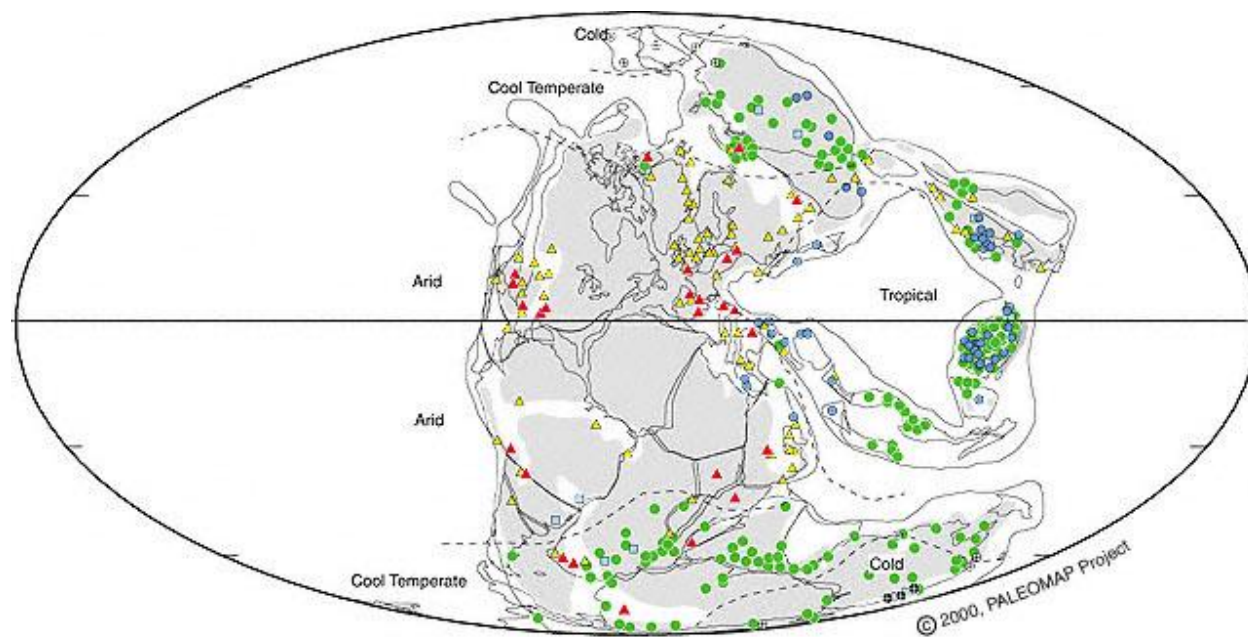


Upper Carboniferous (Gzelian)
(295 Ma)



Lower Permian

(280 Ma)

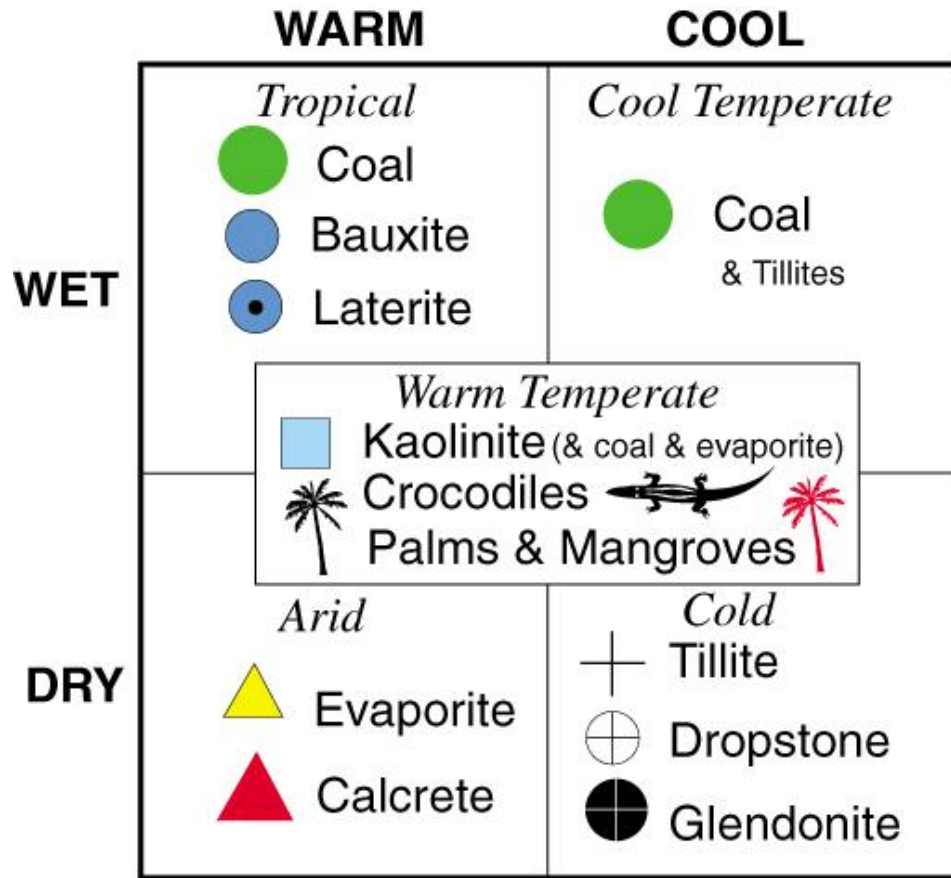


Middle & Upper Permian

(260 Ma)

All maps are from Paleomap Project (C. Scotese – U of Texas at Arlington)

LEGEND



"Paratropical" = High Latitude Bauxites