

A Student's Guide to
Accessing Criminal Justice Information through Statistics Canada

1. Log on to the Library (Full Service MARLIN Login)
2. In the Basic Search Screen, type in **e-stat**
3. This screen will appear:

[CS10F0174XCB](#)
**E-Stat 1999 [electronic resource] : Statistics Canada data and mapping
Statistics Canada.**

Internet access: [Click here to connect to this database.](#)

Corporate Author: [Statistics Canada.](#)

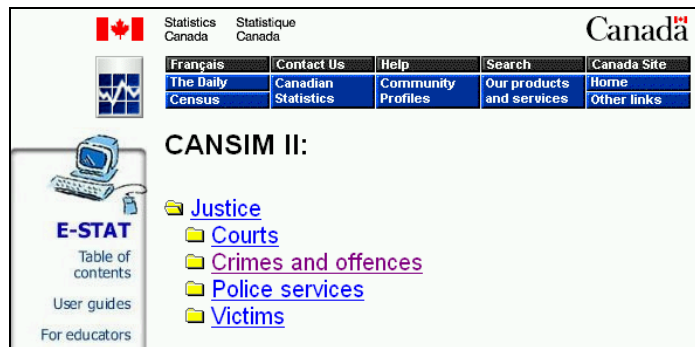
Title: [E-Stat 1999 \[electronic resource\] : Statistics Canada data and mapping.](#)

Publication info: [Ottawa : Statistics Canada, 1999](#)

4. Follow the Internet access link.
5. The next screen that opens will again prompt you for your ID and password.
6. When the next screen opens up, under the heading, NATION, click JUSTICE.
7. You can look this next screen over if you like, but when you're done, click **Data**:



8. A new screen will open up with a set of file folders like this:



9. Click on Crime and offences...
10. You will now see a screen with a list of 12 tables of data. Although you can experiment with accessing this data, for now try the first one, "Crimes, by actual offences, annual" by clicking on the blue number on the left, **Table 252-0001**.

A Student's Guide to
Accessing Criminal Justice Information through Statistics Canada

11. Let's keep the first one you try easy. Under **Geography**, select **Canada**. For the time series, choose 1980 to 2000. Good. Now your screen should look like this:

View [latest article from The Daily](#) related to this table (this will open a new window).

Note: You **must** select at least one item from each one of the lists below:

Geography (16 items)

Select all Deselect all View checklist

Canada
Newfoundland and Labrador
Prince Edward Island
Nova Scotia
New Brunswick

Type of offence (31 items)

Select all Deselect all View checklist

All offences, total
Criminal Code, total
Crimes of violence
Murder
Attempted murder

Note: By default, only data for the most recent year available will be retrieved (this r
You may use the lists below to select a different time frame.

From: 1980 To: 2000 (Annual data)

Retrieve as a Table Retrieve as individual Time Series

12. Now click on **Retrieve as a Table**.

13. You are now in a window where the main heading is **Output specification**.

CANSIM II Table 252-0001 - Microsoft Internet Explorer

File Edit View Favorites Tools Help

Back Forward Stop Home Search Favorites Media Print Refresh

Address <http://ezproxy.mala.bc.ca:2239/cgi-win/CNSMCGLEXE>

Statistics Canada Statistique Canada Canada

Français Contact Us Help Search Canada Site
The Daily Canadian Community Our products Home
Census Statistics Profiles and services Other links

Output specification

Table 252-0001: Crimes, by actual offences, annual (Number of crime

Survey or program details:
Uniform Crime Reporting Survey - [3302](#)

Select an output format from the list below, then click **Go**:

Databasecon Cube *NEW*

The frequency of the output data will be **left unchanged**

The output will contain **data as retrieved**

Titles and labels will be in **English**

Data for **1980** to **2000** will be included in the table.

Go **Modify request**

A Student's Guide to Accessing Criminal Justice Information through Statistics Canada

The only thing you change on this screen is the output format. Select **Databeacon Cube** and then click **Go**.

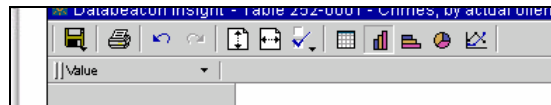
14. If you are prompted to download Databeacon software, just click Yes etc. to have it installed on your computer.
15. You will now see a screen that is similar to an Excel file, like this:

The screenshot shows a web browser window titled 'CANSIM II - Microsoft Internet Explorer'. The address bar shows 'http://ezproxy.mala.bc.ca:2239/cgi-win/CNSMCGLEXE'. The page content includes the Statistics Canada logo and navigation links. The main content area displays a table titled 'Table 252-0001 - Crimes, by actual offences, annual (Number of crimes)'. The table has columns for years from 1980 to 1992 and a row for 'Number of crimes'.

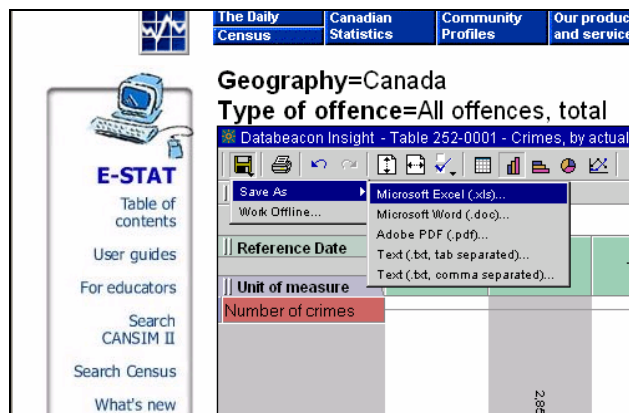
Reference Date	1980	1981	1982	1983	1984	1985	1986	1987	1988	1989	1990	1991	1992
Unit of measure													
Number of crimes	2,692,158	2,850,060	2,838,837	2,249,244	2,239,493	2,270,295	2,374,251	2,470,960	2,486,480	2,532,837	2,719,533	2,992,708	2,951,533

You can scroll across the screen using the arrow keys on the right hand side of your keyboard.

16. Note the icons at the top of the table (below). Click on the one that looks like a bar vertical graph. The data you've requested will be displayed in a chart.



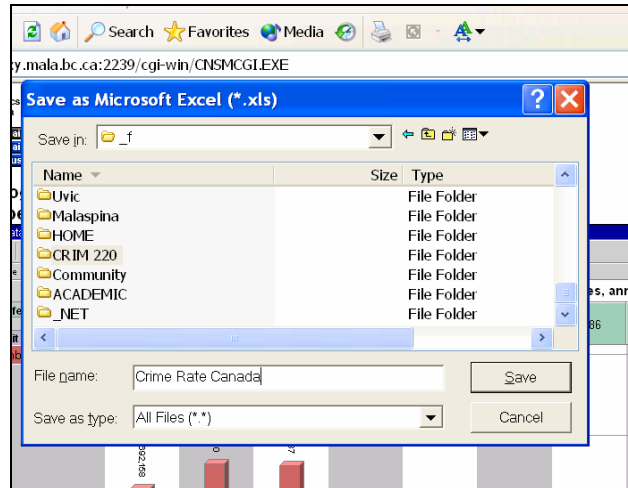
17. Now go back to your spreadsheet display by clicking the square icon which looks like a spreadsheet.
18. Click on the tiny icon which looks like a black floppy disk. You will have an option to save the file as a Microsoft Excel file or *.xls. See the picture below.



A Student's Guide to Accessing Criminal Justice Information through Statistics Canada

You will be prompted for a destination where you want to save your file.

19. Give the file a name and save it to a folder where you can access it later. Note that Databeacon will automatically save it as an Excel file once you've given it a title. See the screenshot below:



20. Now you can go to the folder and double click on the file you've just saved.
21. Open the Excel you've just saved. You can now use the data anyway in Excel any way you like.
22. Go back to the Table of Contents in E-Stat and pick a different data series under **Justice** or **Social Conditions**.
23. Once you picked a data series, create a new Databeacon file, save it and open it in Excel. Use some of the commands you've learned in Excel to work with the data.

TEST YOURSELF

1. Plot the homicide rates of Canada's cities which have a population of more than 500,000.
2. To get you started, **Crimes and offenses from Cansim II**. Go back to the Table of Contents if you need to.
3. Pick the data series 253-0004 **Homicides by census metropolitan areas, Canada, annual**.
4. See how much you can get done. Next week you will have an assignment to complete using the Cansim data retrieval system. You will have 24 hours to complete it so plan your time accordingly.

NOTE: Please report any problems to me as soon as you experience them. You should be able to practice this assignment from home, but there are no guarantees. It depends on how new your home computer is, and what operating system you are using (e.g., Windows 95 will not work and Windows XP is the best).