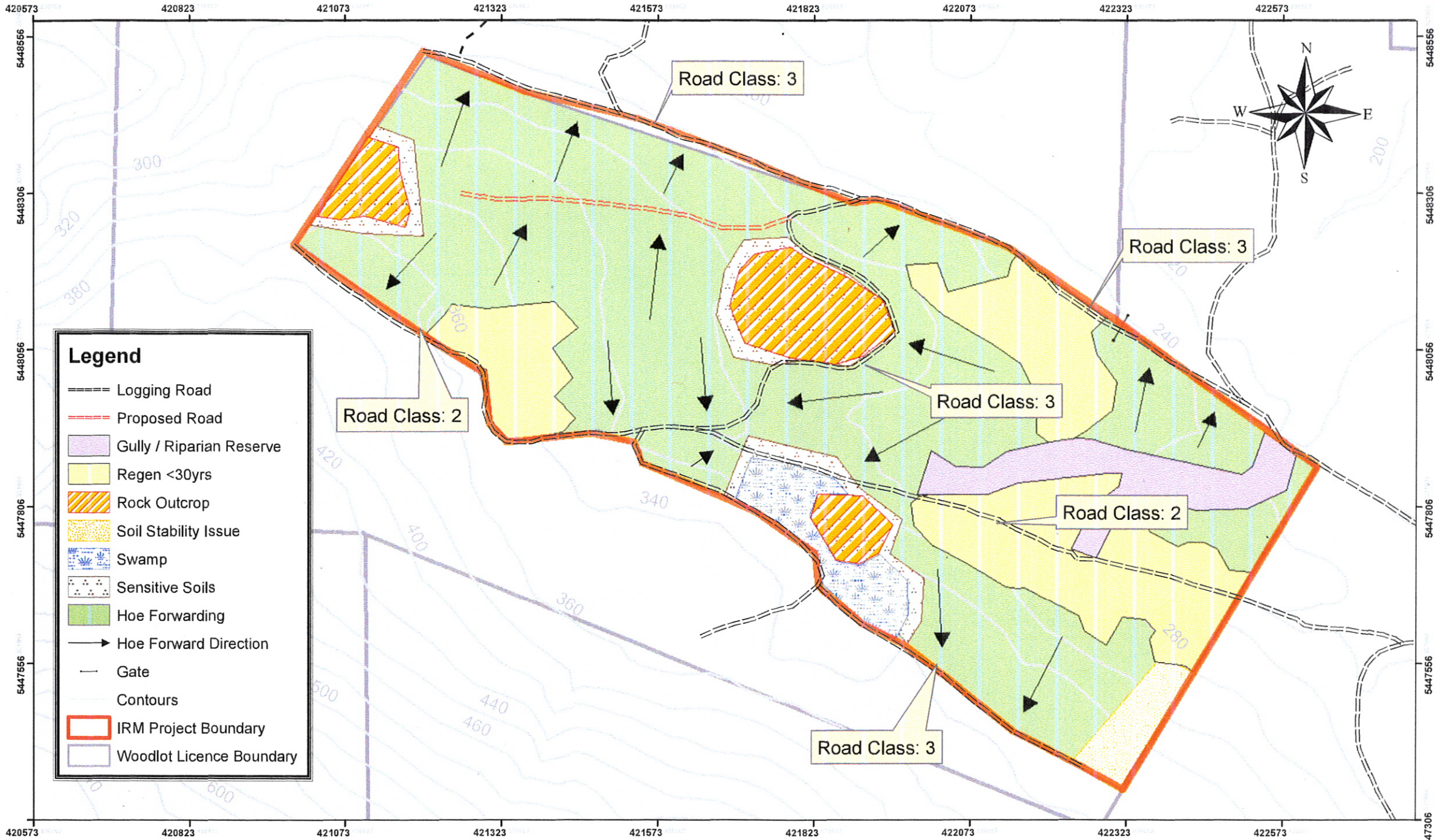


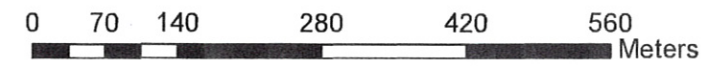
Define

Woodlot 020 THLB Group 3



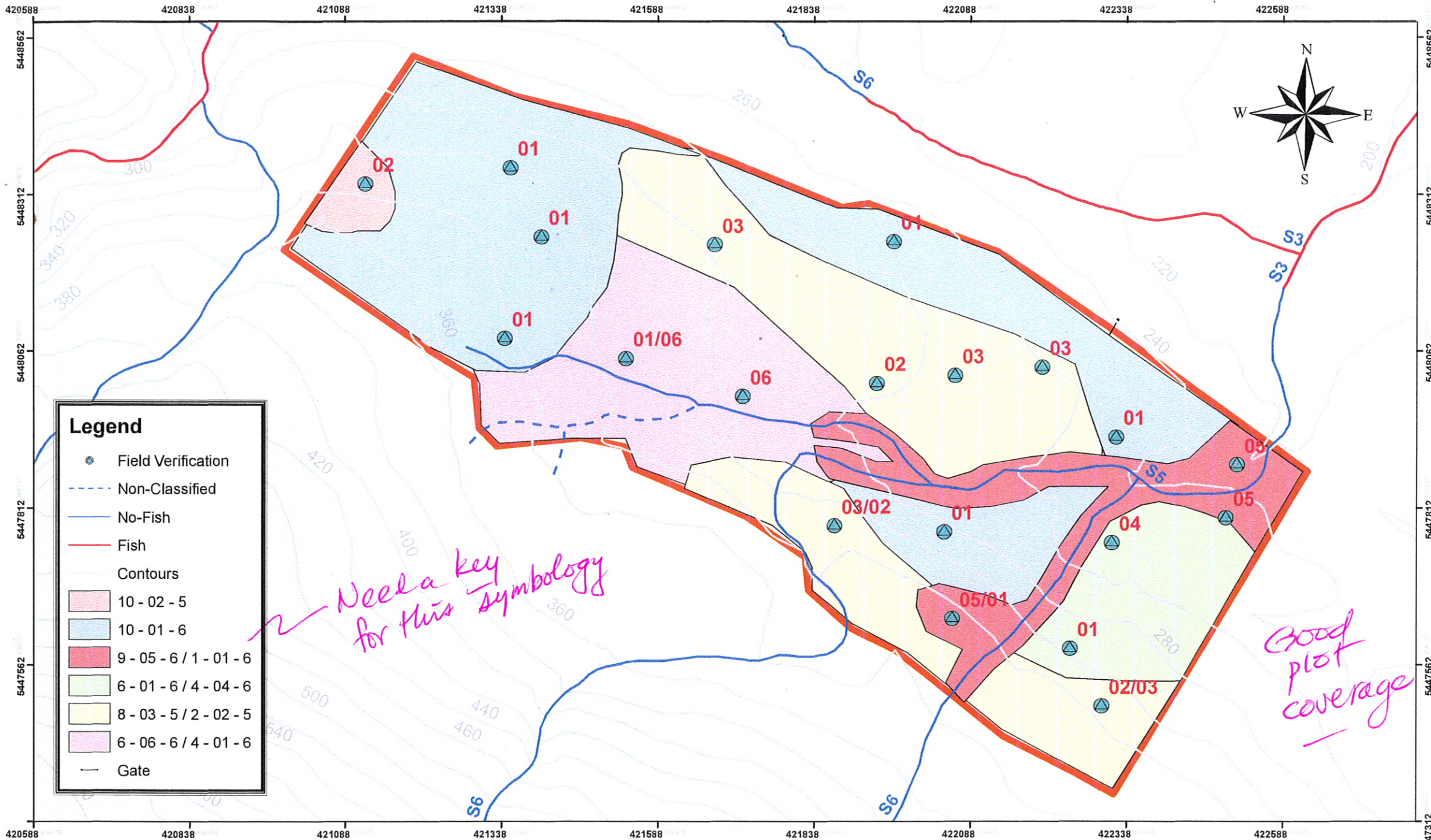
Legend

- Logging Road
- Proposed Road
- Gully / Riparian Reserve
- Regen <30yrs
- Rock Outcrop
- Soil Stability Issue
- Swamp
- Sensitive Soils
- Hoe Forwarding
- Hoe Forward Direction
- Gate
- Contours
- IRM Project Boundary
- Woodlot Licence Boundary



MAP #3

Woodlot 020 TEM Group 3 Area

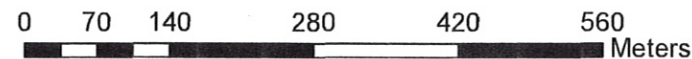


Need a key for this symbology

Good plot coverage

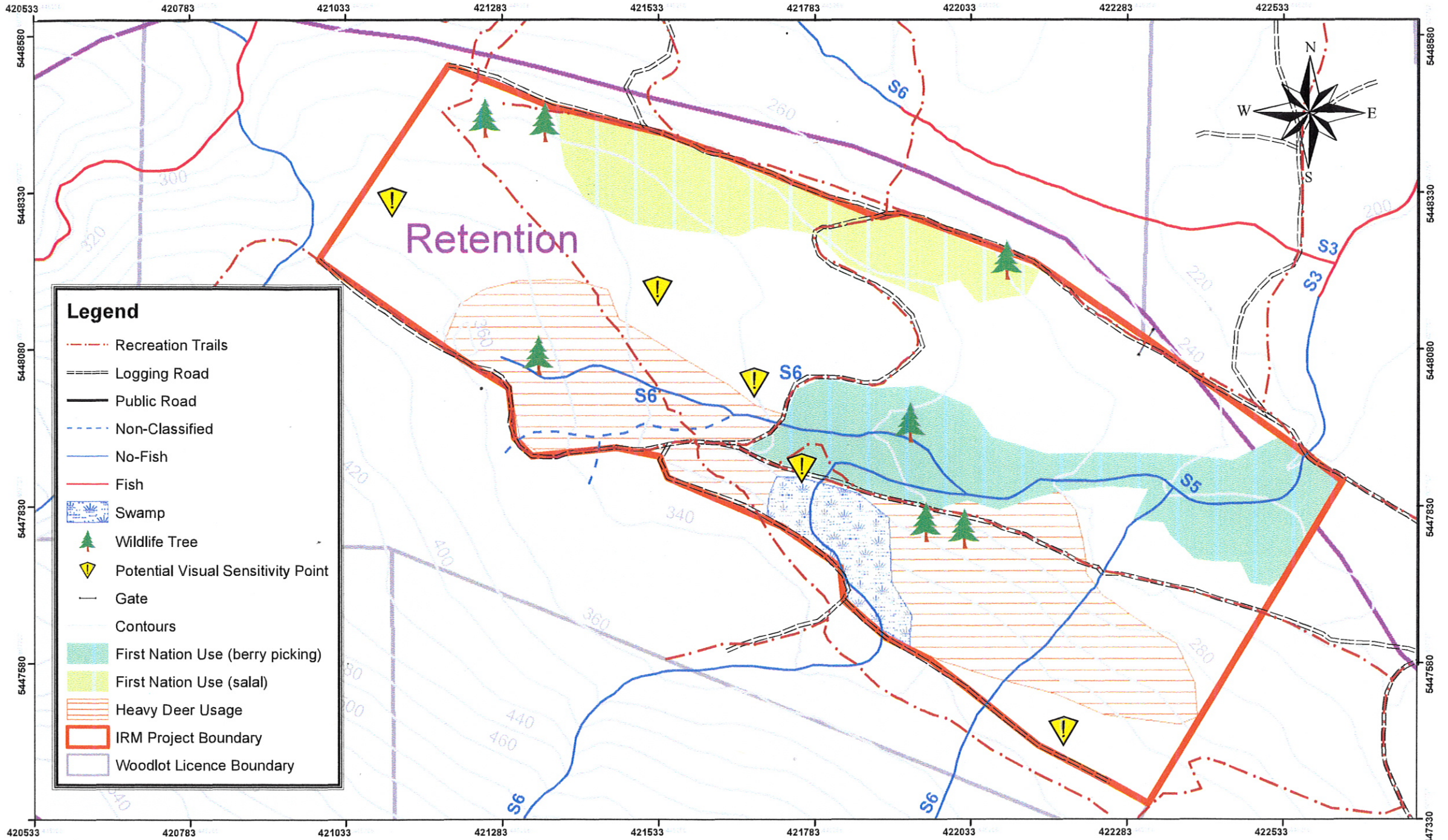
Drafted By: Group 3

1:5,500



MAP# 4

Woodlot 020 Other Resource Values Map IRM Group 3

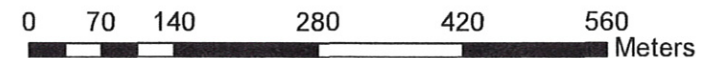


Legend

- Recreation Trails
- Logging Road
- Public Road
- Non-Classified
- No-Fish
- Fish
- Swamp
- Wildlife Tree
- Potential Visual Sensitivity Point
- Gate
- Contours
- First Nation Use (berry picking)
- First Nation Use (salal)
- Heavy Deer Usage
- IRM Project Boundary
- Woodlot Licence Boundary

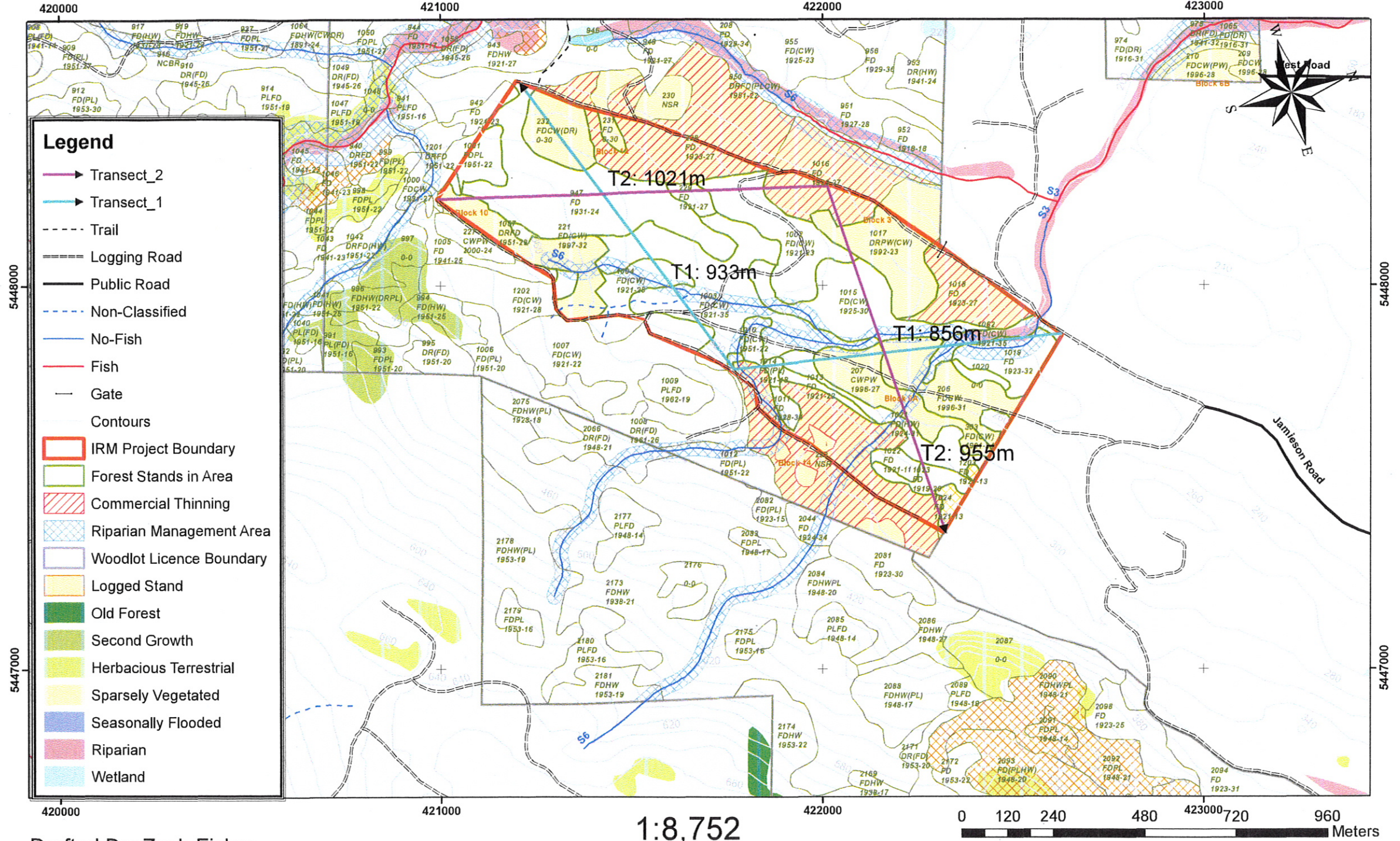
Drafted By: Group 3

1:5,500



MAP#5

Woodlot 020 IRM Group 3 Area



Drafted By: Zach Fisher

1:8,752

0 120 240 480 720 960 Meters

FRST242 IRMP Inventory

Group: 3

Students: Chris, David, Darren, Zach, Rob

CATEGORY	4				3				2				1			
% Range:	100 - 85 (A+/A)				84 - 72 (A-/B)				71 - 55 (B-/C-)				< 55 (D/F)			
Forest cover/Volume Map, recee methods, suppl data, vol table ✓	~All of the elements are covered well <i>Method of calc - missing for plots and for 2000-2013 adjustment.</i>				Most of the elements are covered well				Some of the elements are missing or not covered in enough detail				Many of the elements are missing or not covered well			
Harvest units/roads Map, classes by system, equip, factors, non-harv areas, roads ✓	~All of the elements are covered well <i>Good map and description of equip & non-harv. areas</i>				Most of the elements are covered well				Some of the elements are missing or not covered in enough detail				Many of the elements are missing or not covered well			
Ecosystems Map, site series, sens ecos & soils descr ✓	~All of the elements are covered well <i>Good ecos. table/descri. A few improvements in soils/SE needed</i>				Most of the elements are covered well				Some of the elements are missing or not covered in enough detail <i>MAP needs a KEY</i>				Many of the elements are missing or not covered well			
Forest health Map, descr of current and potential issues	~All of the elements are covered well <i>Well done. Photo sources missing</i>				Most of the elements are covered well				Some of the elements are missing or not covered in enough detail				Many of the elements are missing or not covered well			
Streams, lakes, wetlands Map, classn, descr, water users	~All of the elements are covered well <i>Good field observations</i>				Most of the elements are covered well				Some of the elements are missing or not covered in enough detail				Many of the elements are missing or not covered well			
Wildlife features Map, R&B spp, snags, bear dens, OG vets ✓	~All of the elements are covered well <i>Could describe the specific WTS put on the map (7)</i>				Most of the elements are covered well				Some of the elements are missing or not covered in enough detail <i>No R+B plants</i>				Many of the elements are missing or not covered well			
Recreation Map, trails, other features <i>Part map - 9028</i>	~All of the elements are covered well				Most of the elements are covered well				Some of the elements are missing or not covered in enough detail				Many of the elements are missing or not covered well			
First Nations Map, FN use, cedar areas	~All of the elements are covered well <i>Very brief - need more details</i>				Most of the elements are covered well				Some of the elements are missing or not covered in enough detail				Many of the elements are missing or not covered well			
Visuals Map, VQOs described	~All of the elements are covered well				Most of the elements are covered well				Some of the elements are missing or not covered in enough detail				Many of the elements are missing or not covered well			
Field Notes Original field notes, all aspects	~All of the elements are covered well <i>Consistent format, list of values w/o specific observations</i>				Most of the elements are covered well				Some of the elements are missing or not covered in enough detail				Many of the elements are missing or not covered well			
Overall quality Maps and report	Information is very organized; quality presentation				Mostly; some improvement needed <i>A final proof-read would catch typos</i>				Could be improved significantly				Not adequate			
Points	4.0	3.8	3.6	3.6	3.4	3.2	3.0	3.0	2.8	2.6	2.4	2.4	2.2	2.0	1.8	1.8

TOTAL Score 25.3 / 30 84%

A-